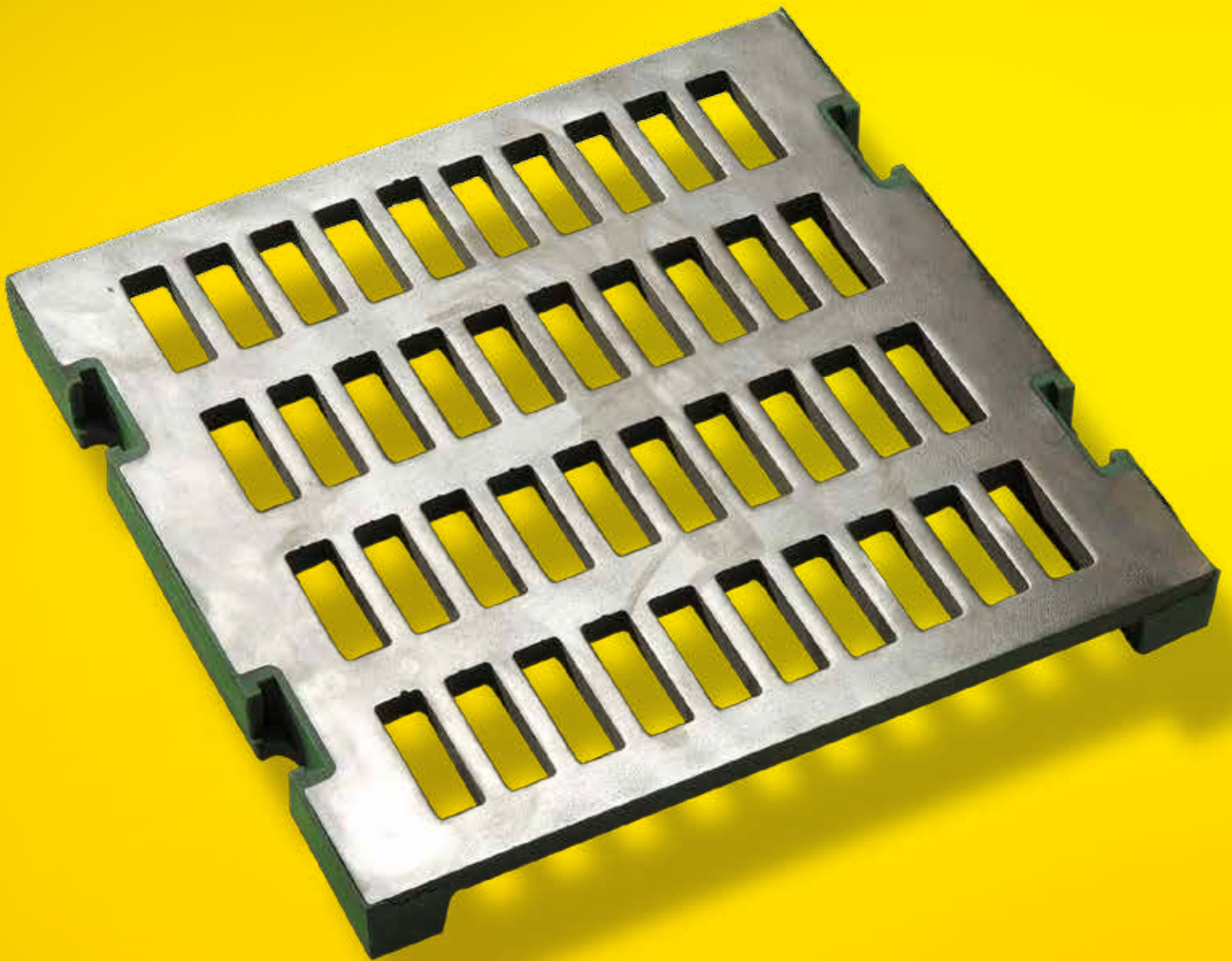


**TEMA ISENMANN**

Polypunch Screen Panels



Screening Media

## Polypunch Screen Panels

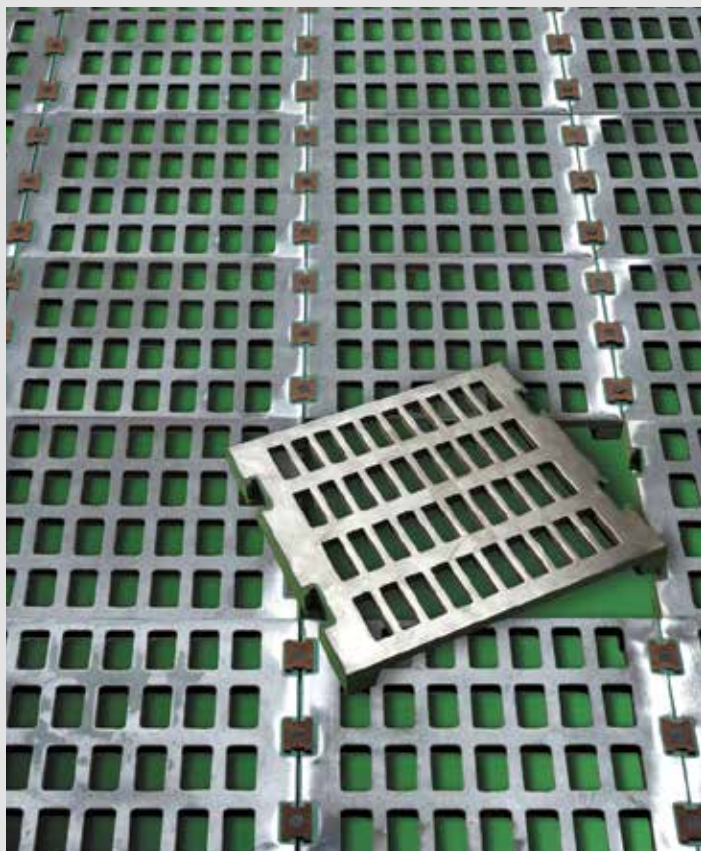
Ideal for use on multislope screens, the Polypunch panel is designed for screens where high impact and high sliding are present.

The Polypunch panel consists of a laser cut perforated-plate screening surface made from a range of wear resistant steels for abrasive applications, including VRN 500 and Bennox to 304 stainless steel and 3CR12 for corrosive environments with cast polyurethane borders. The rigid and strong nature of the steel makes it possible to increase the amount of open area, consequently increasing capacity.

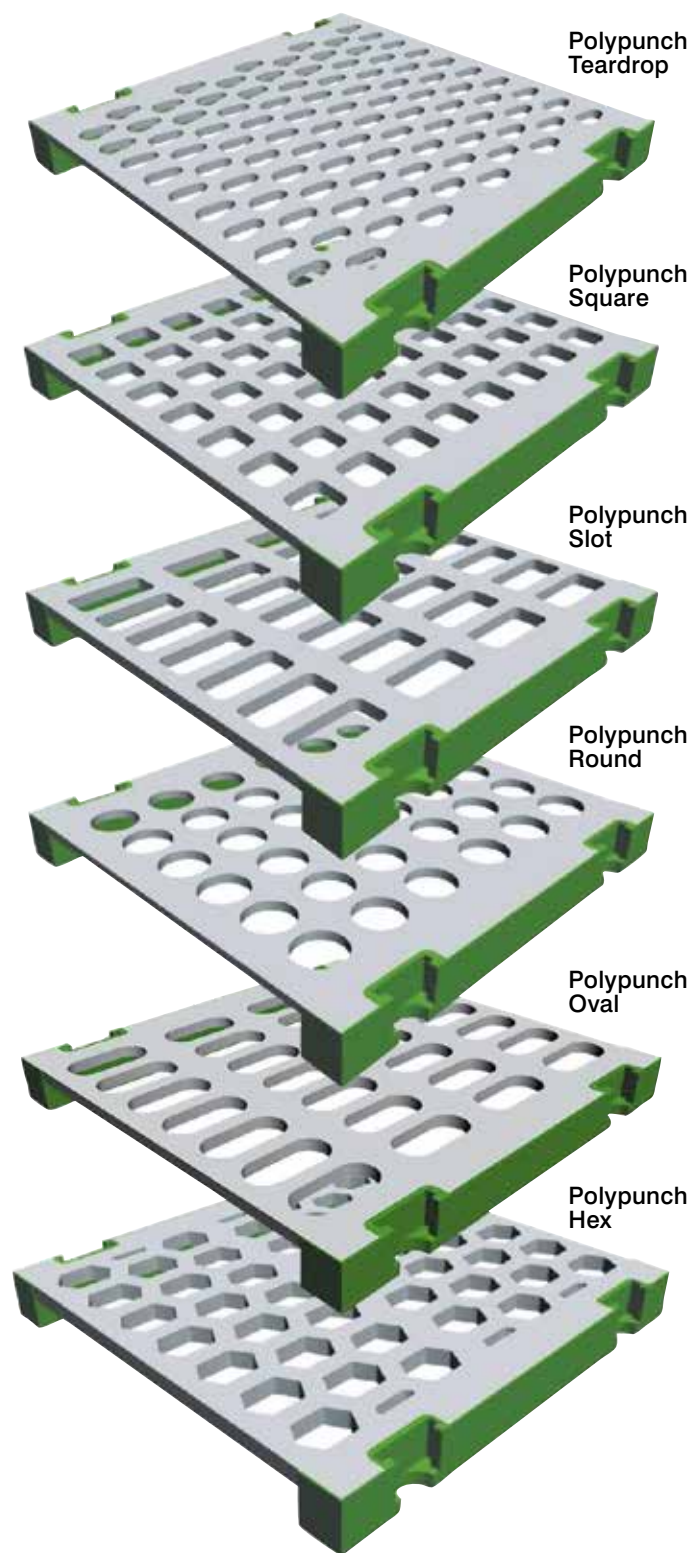
The low friction of the steel plate allows material to flow more easily down the screen, increasing efficiencies and reducing wear. A flat screen-surface deck facilitates even distribution of material across the full width of the screen, eliminating the concentration of material down the valleys.

Much smaller than conventional, large punched plates, the Polypunch panels are safe and easy to handle. In addition, in the case of localised wear, only the worn section needs to be replaced, reducing running costs.

The Polypunch panel can also be used in combination with other panels. For example, the Polypunch panel would be installed where the initial sliding abrasion and impact occurs, with modular polyurethane panels being used for the balance of the screening surface.



To suit the specific screen requirements, Polypunch panels come in standard sizes: 305 x 305 mm • 305 x 610 mm • 305 x 750 mm



Screening Media  
Call (859) 252-0613  
E-mail: [sales@temaisenmann.com](mailto:sales@temaisenmann.com)

Visit [www.temaisenmann.com](http://www.temaisenmann.com)  
to learn more!